

E-Flat  
Folk-like  
2-3-2-2-3

# SOMEWHERE BETWEEN THE WATERS

as played on "Music for Poochy Patrol"

-VIC  
DILLAHAY

♩ = 100 INTRO A

Bsus<sup>2</sup>

Musical staff for Intro A, treble clef, 12/8 time signature, key signature of three sharps (F#, C#, G#). The melody consists of eighth and quarter notes.

INTRO B

Bsus<sup>2</sup>

F#<sup>6/9</sup>

Bsus<sup>2</sup>

Musical staff for Intro B, bass clef, 12/8 time signature, key signature of three sharps. The melody consists of eighth and quarter notes.

MELODY A

E<sup>(add9)</sup>

B/D#

B/C#

B/D#

C#m<sup>7</sup>

B<sup>6</sup>

B/C#

B/D#

B/D#

C#m<sup>7</sup>

Musical staff for Melody A, bass clef, 12/8 time signature, key signature of three sharps. The melody consists of quarter and eighth notes.

MELODY B

G#m

B/C#

B/D#

C#m

B

B/D#

C#m<sup>7</sup>

G#m

C#m

B/D#

G#m

Musical staff for Melody B, bass clef, 12/8 time signature, key signature of three sharps. The melody consists of quarter and eighth notes.

MELODY C

E<sup>(add9)</sup>

F#sus

G#m<sup>7</sup>

E<sup>(add9)</sup>

F#sus

G#m<sup>7</sup>

E<sup>(add9)</sup>

F#sus

G#m<sup>7</sup>/D#

Musical staff for Melody C, bass clef, 12/8 time signature, key signature of three sharps. The melody consists of quarter and eighth notes.

INTERLUDE

EMaj<sup>7</sup>

D#m<sup>7</sup>

C#m<sup>7</sup>

EMaj<sup>7</sup>

D#m<sup>7</sup>

C#m<sup>7</sup>

Musical staff for Interlude, bass clef, 12/8 time signature, key signature of three sharps. The melody consists of quarter and eighth notes.

SOLO A

B

D#m

B

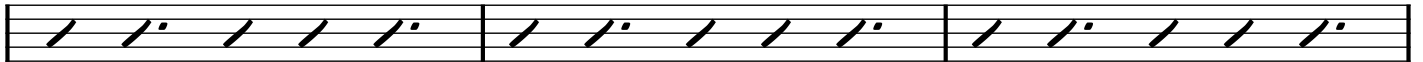
Musical staff for Solo A, bass clef, 12/8 time signature, key signature of three sharps. The staff contains rhythmic slashes representing a solo.

SOLO B

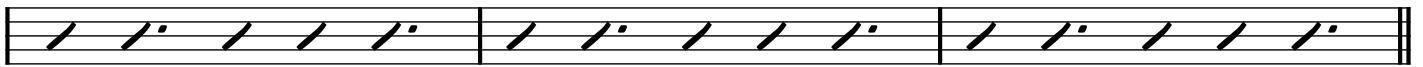
B

Musical staff for Solo B, bass clef, 12/8 time signature, key signature of three sharps. The staff contains rhythmic slashes representing a solo.

D#m



B



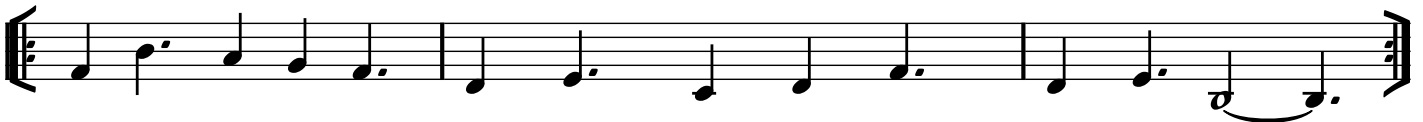
INTRO A

Bsus<sup>2</sup>



MELODY A

E<sup>(add9)</sup> B/D# B/C# B/D# C#m7 B<sup>6</sup> B/C# B/D# B/D# C#m7



MELODY B

G#m B/C# B/D# C#m B B/D# C#m7 G#m C#m B/D# G#m



INTRO B

Bsus<sup>2</sup>

F#<sup>6/9</sup>

Bsus<sup>2</sup>

INTRO A

Bsus<sup>2</sup>

Repeat and Fade

