

# SOMEWHERE BETWEEN THE WATERS

Folk-like  
2-3-2-2-3

as played on "Music for Poochy Patrol"

-VIC DILLAHAY

♩=100 INTRO A

Dsus<sup>2</sup>

INTRO B

Dsus<sup>2</sup>

A<sup>6/9</sup>

Dsus<sup>2</sup>

MELODY A

G<sup>(add9)</sup>

D/F#

D/E

D/F# Em<sup>7</sup>

D<sup>6</sup>

D/E

D/F#

D/F# Em<sup>7</sup>

MELODY B

Bm

D/E

D/F#

Em

D

D/F#

Em<sup>7</sup>

Bm

Em

D/F#

Bm

MELODY C

G<sup>(add9)</sup>

Asus

Bm<sup>7</sup>

G<sup>(add9)</sup>

Asus

Bm<sup>7</sup>

G<sup>(add9)</sup>

Asus Bm<sup>7</sup>/F#

INTERLUDE

GMaj<sup>7</sup>

F#m<sup>7</sup>

Em<sup>7</sup>

GMaj<sup>7</sup>

F#m<sup>7</sup>

Em<sup>7</sup>

SOLO A

D

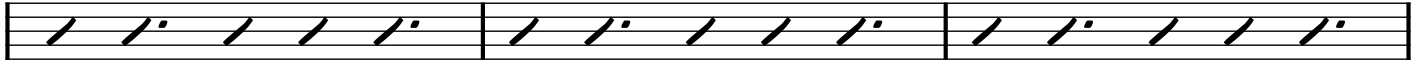
F#m

D

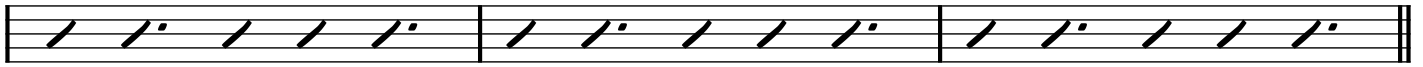
SOLO B

D

F#m



D



INTRO A

Dsus<sup>2</sup>



MELODY A

G<sup>(add9)</sup>

D/F# D/E D/F# Em<sup>7</sup> D<sup>6</sup> D/E D/F# D/F# Em<sup>7</sup>



MELODY B

Bm

D/E D/F# Em D D/F# Em<sup>7</sup> Bm Em D/F# Bm



INTRO B

Dsus<sup>2</sup>

A<sup>6/9</sup>

Dsus<sup>2</sup>

INTRO A

Dsus<sup>2</sup>

Repeat and Fade

